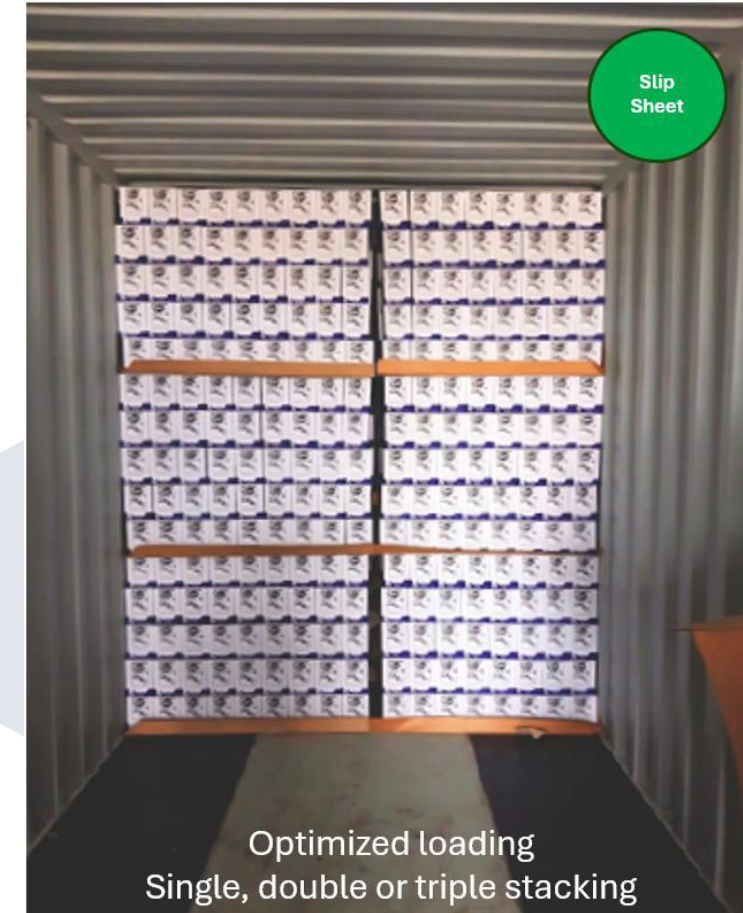
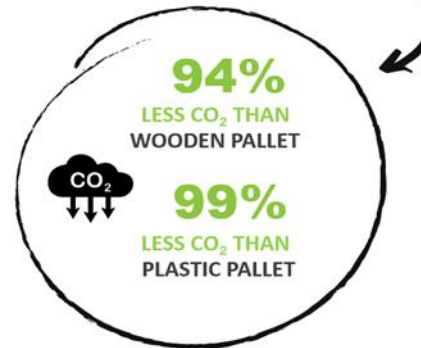


Slip Sheets – Reducing Costs and Carbon Footprint



Production emissions are



Why Use Slip Sheets?

- Reduce transport and fuel consumption by using a slip sheet instead of a 15kg-25kg wooden pallet .
- 94% less CO2 emissions compared to wooden pallets from cradle to gate – additional CO2 for freight forwarding empty pallets vs slip sheets.
- Slip Sheets are 100% recyclable and can be reused.
- Reduce freight costs – less containers needed as more goods shipped on each container. Saves 8 cubic metres per container.
- Cost of warehouse ordering, handling and storage of pallets – for every 10 wooden pallets you can store 1500 slip sheets.



How Do I Use It?

- Slip sheets are handled with a Push/Pull attachment (or Rollerforks).
- Attachments are compatible with most FLT and attach & detach very quickly.
- The sender and receiver need the attachment to load and unload.
- The ROI is very fast, due to the huge savings from the material/transport costs.
- You can still use standard pallets as slave pallets in your racking or to transport goods around the warehouse.

